

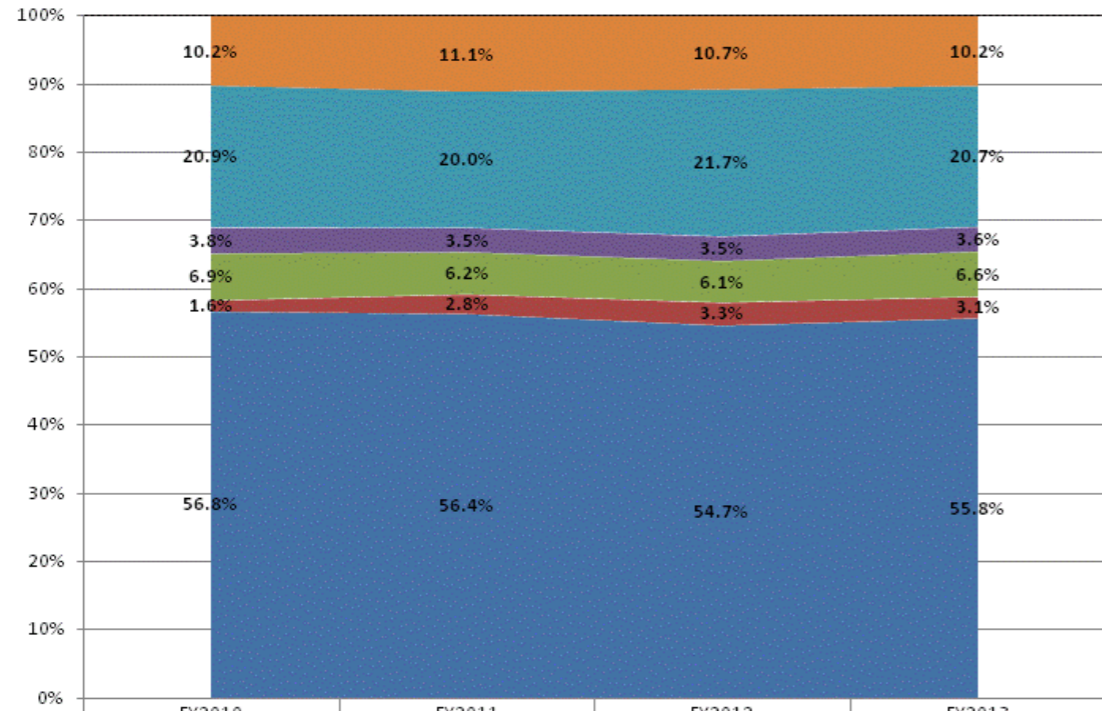
School Corporation Expenditures by Expenditure Type
Biannual Financial Report Data July 2012 - June 2013
Crawford Co Com School Corp (1300)

Crawford Co Com School Corp (1300)

	FY 2006	FY06 % of Total Exp	FY 2009	FY09 % of Total Exp	FY 2012	FY12 % of Total Exp	FY 2013	FY13 % of Total Exp
Student Academic Achievement	\$10,304,828	57.1%	\$10,518,910	58.0%	\$10,148,206	54.7%	\$10,352,352	55.8%
Student Instructional Support	\$1,122,903	6.2%	\$1,530,809	8.4%	\$1,747,540	9.4%	\$1,807,468	9.7%
Overhead and Operational	\$3,779,026	20.9%	\$4,273,166	23.5%	\$4,676,971	25.2%	\$4,510,310	24.3%
Nonoperational	\$2,852,954	15.8%	\$1,827,608	10.1%	\$1,988,998	10.7%	\$1,894,536	10.2%
Grand Total	\$18,059,711		\$18,150,493		\$18,561,715		\$18,564,666	

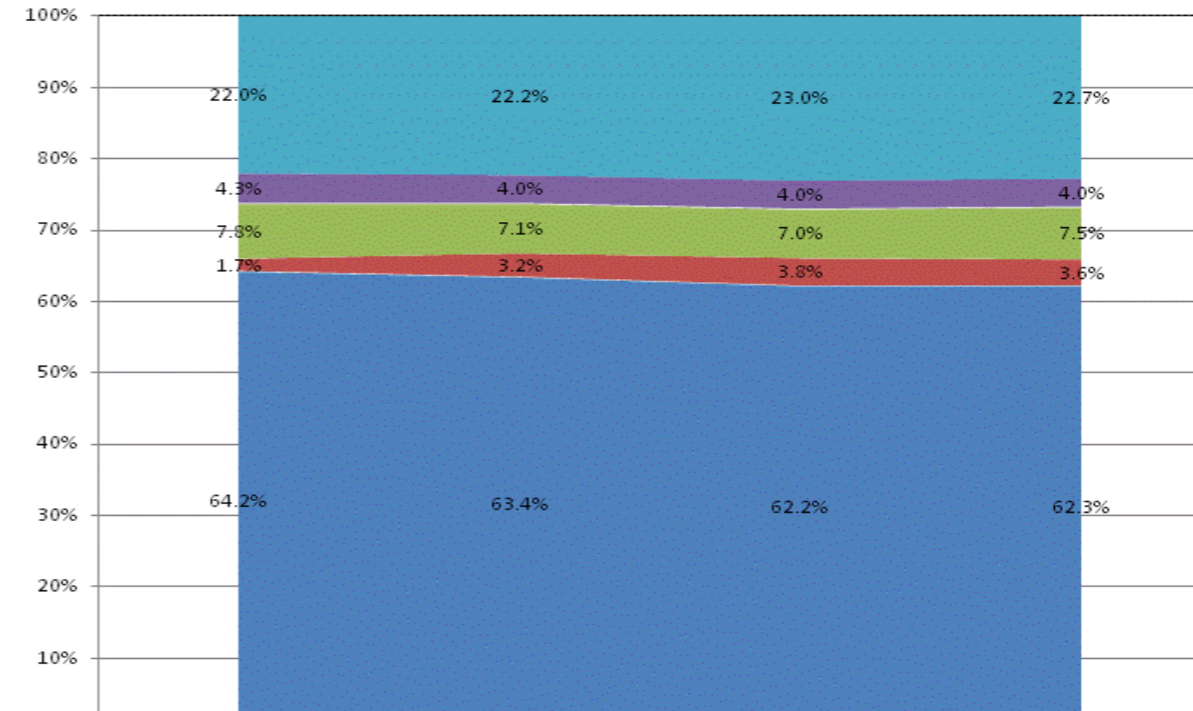
	FY 2006	FY 2009	FY 2012	FY 2013
Student Instructional Expenditures (Academic Achievement plus Support)	63.3%	66.4%	64.1%	65.5%

All Expenditures



	FY2010	FY2011	FY2012	FY2013
Non-Operational	10.2%	11.1%	10.7%	10.2%
Other Overhead and Operational	20.9%	20.0%	21.7%	20.7%
Corporation Administration	3.8%	3.5%	3.5%	3.6%
School Administration	6.9%	6.2%	6.1%	6.6%
Other Student Instructional Support	1.6%	2.8%	3.3%	3.1%
Student Academic Achievement	56.8%	56.4%	54.7%	55.8%

Operational Expenditures Only



	FY2010	FY2011	FY2012	FY2013
Other Overhead and Operational	22.0%	22.2%	23.0%	22.7%
Corporation Administration	4.3%	4.0%	4.0%	4.0%
School Administration	7.8%	7.1%	7.0%	7.5%
Other Student Instructional Support	1.7%	3.2%	3.8%	3.6%
Student Academic Achievement	64.2%	63.4%	62.2%	62.3%

**School Corporation Expenditures by Expenditure Type
Biannual Financial Report Data July 2012 - June 2013
Crawford Co Com School Corp (1300)**

Account	FY 2006	FY 2009	FY 2012	FY 2013	Increase from FY 2006	Increase from FY 2009	Increase from previous year
Student Academic Achievement							
11050 Regular Programs; Full Day Kindergarten	\$402,661	\$662,956	\$543,115	\$693,775	72%	5%	28%
11100 Regular Programs; Elementary	\$3,457,712	\$4,253,507	\$4,152,334	\$4,209,139	22%	-1%	1%
11200 Regular Programs; Middle/Junior High	\$2,090	\$655	\$0	\$0	-100%	-100%	N/A
11300 Regular Programs; High School	\$1,695,947	\$2,909,008	\$3,028,177	\$2,896,863	71%	0%	-4%
11350 Regular Programs; High School; Academic Honors Diploma	\$0	\$99,094	\$87,842	\$93,533	N/A	-6%	6%
11420 Vocational Education; Agriculture B	\$61,674	\$81,828	\$80,262	\$84,550	37%	3%	5%
11450 Vocational Education; Consumer and Homemaking	\$33,925	\$72,752	\$73,852	\$91,703	170%	26%	24%
11470 Vocational Education; Business Education	\$148,119	\$119,144	\$79,729	\$90,852	-39%	-24%	14%
11480 Vocational Education; Industrial Education A	\$54,658	\$128,527	\$134,161	\$142,595	161%	11%	6%
11490 Vocational Education; Industrial Education B	\$36,471	\$0	\$0	\$0	-100%	N/A	N/A
11630 Regular Programs; Alternative Education Programs; High School	\$114,581	\$122,141	\$122,141	\$122,141	7%	0%	0%
12110 Gifted And Talented; Gifted and Talented	\$0	\$232,780	\$30,149	\$90,303	N/A	-61%	200%
12210 Mental Disabilities; Mild Mental Disabilities	\$54,731	\$84,852	\$88,033	\$89,700	64%	6%	2%
12220 Mental Disabilities; Moderate Mental Disabilities	\$232	\$524	\$9,505	\$1,649	> 500%	215%	-83%
12230 Mental Disabilities; Severe Mental Disabilities	\$0	\$0	\$100	\$0	N/A	N/A	-100%
12350 Physical Impairment; Homebound	\$2,684	\$7,652	\$13,236	\$8,264	208%	8%	-38%
12510 Culturally Different; Communication Disorders	\$54,522	\$85,671	\$79,140	\$92,975	71%	9%	17%
12520 Culturally Different; Compensatory	\$21,272	\$117	\$0	\$0	-100%	-100%	N/A
12610 Learning Disability	\$49,240	\$0	\$0	\$0	-100%	N/A	N/A
12710 Equal Opportunity At Risk	\$101,657	\$55,933	\$50,980	\$47,117	-54%	-16%	-8%
12810 Special Education Preschool	\$0	\$0	\$109,723	\$111,130	N/A	N/A	1%
14100 Summer School Programs; Elementary	\$0	\$21,788	\$25,901	\$28,885	N/A	33%	12%
14300 Summer School Programs; High School	\$0	\$0	\$0	\$1,200	N/A	N/A	N/A
16100 Remediation Testing	\$0	\$181,861	\$0	\$0	N/A	-100%	N/A
16200 Preventive Remediation	\$68,248	\$0	\$211,852	\$176,011	158%	N/A	-17%
17300 Payments to Other Governmental Units Within State; Area Vocational School (Participa	\$36,198	\$77,382	\$86,933	\$123,740	242%	60%	42%
17400 Payments to Other Governmental Units Within State; Joint Services and Supply; Speci	\$551,131	\$692,178	\$511,467	\$636,860	16%	-8%	25%
17500 Payments to Other Governmental Units Within State; Special Education; Interlocal Agr	\$87,687	\$63,983	\$0	\$0	-100%	-100%	N/A
17900 Payments to Other Governmental Units Within State; Other	\$18,000	\$0	\$0	\$0	-100%	N/A	N/A
22110 Improvement of Instruction; Service Area Direction	\$0	\$31,400	\$9,185	\$0	N/A	-100%	-100%
22120 Improvement of Instruction; Instruction and Curriculum Development	\$35,666	\$9,209	\$40,464	\$54,453	53%	491%	35%
22220 Library/Media Services; School Library	\$129,798	\$218,500	\$222,318	\$197,147	52%	-10%	-11%
22310 Instruction, Related Technology; Technology Service Supervision and Administration	\$40,531	\$121,420	\$37,946	\$99,015	144%	-18%	161%
22320 Instruction, Related Technology; Student Learning Centers	\$0	\$0	\$1,948	\$0	N/A	N/A	-100%
22330 Instruction, Related Technology; Systems Analysis and Planning	\$0	\$0	\$0	\$21,606	N/A	N/A	N/A
22360 Instruction, Related Technology; Network Support	\$48,744	\$44,144	\$24,220	\$62,113	27%	41%	156%
22380 Instruction, Related Technology; Professional Development for Instruction, Focused Tr	\$0	\$0	\$35	\$0	N/A	N/A	-100%
22900 Other Support Service, Instructional Staff	\$0	\$5,998	\$79,489	\$30,532	N/A	409%	-62%
25520 Textbooks for Rent or Resale; Textbooks, Workbooks, and Repairs	\$0	\$133,908	\$213,970	\$54,502	N/A	-59%	-75%
25560 Textbooks for Rent or Resale; Textbooks and Workbooks	\$204,988	\$0	\$0	\$0	-100%	N/A	N/A
26497 2007 Account Code - Teachers Retirement Fund	\$357,034	\$0	\$0	\$0	N/A	N/A	N/A
Student Academic Achievement Total	\$7,870,201	\$10,518,910	\$10,148,206	\$10,352,352	32%	-2%	2%
Student Instructional Support							
21110 Attendance and Social Work Services; Service Area Direction	\$0	\$3,902	\$0	\$0	N/A	-100%	N/A
21130 Attendance and Social Work Services; Social Work Services	\$0	\$0	\$34,424	\$36,574	N/A	N/A	6%
21220 Guidance Services; Counseling Services	\$64,301	\$237,781	\$465,689	\$428,389	> 500%	80%	-8%
21320 Health Services; Medical Services	\$884	\$489	\$581	\$85	-90%	-83%	-85%
21340 Health Services; Nurse Services	\$40,925	\$69,048	\$89,181	\$87,644	114%	27%	-2%
21390 Health Services; Other Health Services	\$0	\$0	\$4,200	\$200	N/A	N/A	-95%

School Corporation Expenditures by Expenditure Type
Biannual Financial Report Data July 2012 - June 2013
Crawford Co Com School Corp (1300)

Account	FY 2006	FY 2009	FY 2012	FY 2013	Increase from FY 2006	Increase from FY 2009	Increase from previous year
21430 Psychological Counseling	\$0	\$0	\$0	\$300	N/A	N/A	N/A
21990 Other Support Services, Students; Other Student Services	\$2,567	\$3,995	\$27,741	\$28,450	> 500%	> 500%	3%
24100 Office of The Principal	\$688,721	\$1,209,179	\$1,034,520	\$1,130,272	64%	-7%	9%
24900 Other Support Services, School Administration	\$0	\$6,415	\$91,205	\$95,555	N/A	> 500%	5%
Student Instructional Support Total	\$797,399	\$1,530,809	\$1,747,540	\$1,807,468	127%	18%	3%
Overhead and Operational							
23110 Board of Education; Service Area Direction	\$23,655	\$99,960	\$89,053	\$97,938	314%	-2%	10%
23120 Board of Education; Service Area Assistants	\$145,936	\$227,958	\$212,710	\$235,883	62%	3%	11%
23150 Board of Education; Legal Services	\$9,641	\$3,120	\$3,467	\$6,081	-37%	95%	75%
23160 Board of Education; Promotion Expenses	\$2,370	\$1,683	\$3,046	\$1,654	-30%	-2%	-46%
23210 Executive Administration; Office of The Superintendent	\$112,124	\$168,134	\$160,724	\$161,559	44%	-4%	1%
23230 Executive Administration; Staff Relations and Negotiations	\$32,222	\$0	\$0	\$0	-100%	N/A	N/A
23290 Executive Administration; Other Executive Administration Services	\$41,780	\$0	\$0	\$0	-100%	N/A	N/A
25110 Fiscal Services; Office of The Business Manager	\$0	\$67,044	\$75,687	\$62,314	N/A	-7%	-18%
25150 Fiscal Services; Payroll Services	\$77	\$0	\$1,359	\$2,404	> 500%	N/A	77%
25191 Other Fiscal Services; Refund of Revenue	\$0	\$0	\$0	\$4,897	N/A	N/A	N/A
25193 Other Fiscal Services; Printed Forms	\$1,649	\$0	\$0	\$0	-100%	N/A	N/A
25195 Other Fiscal Services; Bank Account Service Charge	\$55	\$25	\$29	\$0	-100%	-100%	-100%
25199 Other Fiscal Services; Other	\$0	\$18,000	\$0	\$0	N/A	-100%	N/A
25810 Administrative Technology Services; Technology Services Supervision And Administra	\$0	\$7,650	\$110,648	\$88,738	N/A	> 500%	-20%
25860 Administrative Technology Services; Hardware Maintenance And Support	\$0	\$0	\$416	\$0	N/A	N/A	-100%
25890 Other Technology Services	\$0	\$8,519	\$0	\$0	N/A	-100%	N/A
25990 Other Support Services, Central	\$18,568	\$0	\$0	\$0	-100%	N/A	N/A
26200 Operation and Maintenance of Plant Services; Maintenance of Buildings	\$985,157	\$1,300,770	\$1,224,756	\$1,252,728	27%	-4%	2%
26300 Operation and Maintenance of Plant Services; Maintenance of Grounds	\$15,677	\$9,729	\$18,892	\$10,724	-32%	10%	-43%
26400 Operation and Maintenance of Plant Services; Maintenance of Equipment	\$113,995	\$94,148	\$145,060	\$144,201	26%	53%	-1%
26495 2007 Account Code - Support Services, Central ; Other Staff Services ; Official Bonds	\$703	\$0	\$0	\$0	N/A	N/A	N/A
26499 2007 Account Code - Other	\$2,956	\$0	\$0	\$0	N/A	N/A	N/A
26600 Operation and Maintenance of Plant Services; Security Services	\$90	\$0	\$0	\$0	-100%	N/A	N/A
26700 Operation and Maintenance of Plant Services; Insurance	\$102,210	\$136,595	\$99,459	\$95,087	-7%	-30%	-4%
26800 Operation and Maintenance of Plant Services; Other Operation and Maintenance of Pla	\$142	\$0	\$0	\$0	-100%	N/A	N/A
27010 Student Transportation; Service Area Direction	\$5,535	\$110,929	\$33,430	\$8,508	54%	-92%	-75%
27100 Student Transportation; Vehicle Operation	\$0	\$0	\$0	\$344	N/A	N/A	N/A
27200 Student Transportation; Monitoring Services	\$34,972	\$51,263	\$82,901	\$78,122	123%	52%	-6%
27300 Student Transportation; Vehicle Servicing and Maintenance	\$81,759	\$94,491	\$147,743	\$163,625	100%	73%	11%
27400 Student Transportation; Purchase of School Buses	\$0	\$78,378	\$253,181	\$59,000	N/A	-25%	-77%
27500 Student Transportation; Insurance on Buses	\$19,388	\$16,382	\$11,183	\$9,630	-50%	-41%	-14%
27700 Student Transportation; Contracted Transportation Services	\$962,465	\$943,215	\$961,546	\$875,074	-9%	-7%	-9%
27900 Student Transportation; Other Student Transportation Services	\$2,628	\$1,862	\$142,531	\$173,546	> 500%	> 500%	22%
31200 Food Services Operations; Food Preparation and Dispensing	\$597,623	\$833,312	\$899,149	\$978,252	64%	17%	9%
31900 Other Food Services	\$6,048	\$0	\$0	\$0	-100%	N/A	N/A
Overhead and Operational Total	\$3,319,425	\$4,273,166	\$4,676,971	\$4,510,310	36%	6%	-4%
Nonoperational							
33400 Athletic Coaches	\$131,650	\$160,085	\$162,136	\$158,601	20%	-1%	-2%
33990 Other Community Services; Other	\$15,328	\$23,684	\$14,794	\$5,190	-66%	-78%	-65%
41000 Facilities Acquisition and Construction; Land Acquisition and Development	\$379	\$26,086	\$1,220	\$142	-63%	-99%	-88%
43000 Facilities Acquisition and Construction; Professional Services	\$95,064	\$9,370	\$1,870	\$1,870	-98%	-80%	0%
45100 Building Acquisition, Construction and Improvements	\$916,289	\$57,420	\$165,094	\$385,269	-58%	> 500%	133%
45500 Facilities Acquisition and Construction; Rent of Buildings, Facilities, and Equipment	\$0	\$0	\$1,680	\$119	N/A	N/A	-93%

School Corporation Expenditures by Expenditure Type
Biannual Financial Report Data July 2012 - June 2013
Crawford Co Com School Corp (1300)

Account	FY 2006	FY 2009	FY 2012	FY 2013	Increase from FY 2006	Increase from FY 2009	Increase from previous year
46000 Facilities Acquisition and Construction; Purchase of Moveable Equipment	\$1,707	\$410	\$25,115	\$0	-100%	-100%	-100%
47000 Facilities Acquisition and Construction; Purchase of Mobile or Fixed Equipment	\$180,563	\$182,708	\$163,956	\$183,725	2%	1%	12%
49000 Facilities Acquisition and Construction; Other Facilities Acquisition and Construction	\$66,303	\$13,330	\$51,059	-\$25,000	-138%	-288%	-149%
52100 Debt Services; Interest on Debt; Bonds	\$0	\$361,162	\$397,728	\$163,063	N/A	-55%	-59%
52200 Debt Services; Interest on Debt; Temporary Loans	\$14,083	\$0	\$0	\$0	-100%	N/A	N/A
53100 Debt Services; Lease Rental; Buildings ; Principal	\$732,075	\$993,354	\$1,004,347	\$1,007,854	38%	1%	0%
53300 Debt Services; Lease Rental; School Buses ; Principal	\$1,073	\$0	\$0	\$0	-100%	N/A	N/A
53400 Debt Services; Lease Rental; Other ; Principal	\$0	\$0	\$0	\$13,704	N/A	N/A	N/A
54200 Common School Fund; Principal	\$639,330	\$0	\$0	\$0	-100%	N/A	N/A
Nonoperational Total	\$2,793,844	\$1,827,608	\$1,988,998	\$1,894,536	-32%	4%	-5%
Prorated By Fund							
26491 2007 Account Code - PERF	\$131,139	\$0	\$0	\$0	N/A	N/A	N/A
26492 2007 Account Code - Social Security	\$591,119	\$0	\$0	\$0	N/A	N/A	N/A
26494 2007 Account Code - Group Insurance	\$2,496,445	\$0	\$0	\$0	N/A	N/A	N/A
26496 2007 Account Code - Unemployment Compensation	\$4,475	\$0	\$0	\$0	N/A	N/A	N/A
26498 2007 Account Code - Severance / Early Retirement Pay	\$55,664	\$0	\$0	\$0	N/A	N/A	N/A
Prorated By Fund Total	\$3,278,842	\$0	\$0	\$0	N/A	N/A	N/A